

# Project Erasmus+

Particulate matter and Water quality

# Particulate matter

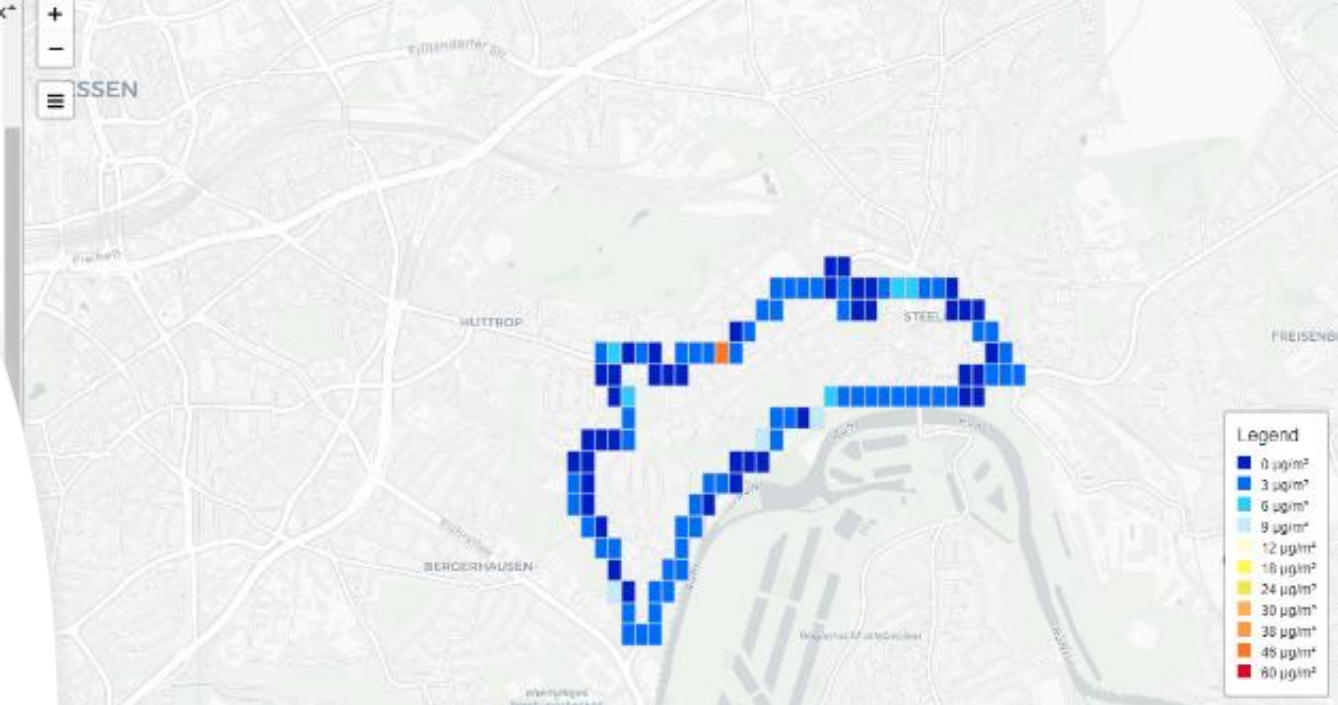
## Germany: Essen-Steele

- Not close to a highway
- No industry
- No beach

## The Netherlands: Heemskerk

- Close to a highway (A9)
- Industry (Tata Steel)
- A beach

Germany better



# Water quality

Dortmund:

1. Perla Maginata (good)
2. Sericostoma (good)

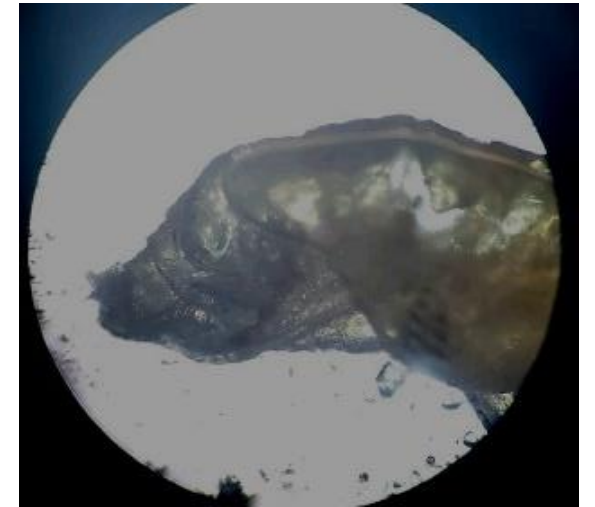
Essen:

3. Schlammöhrenwurm (bad)
4. Rollegel (bad)

Dortmund better



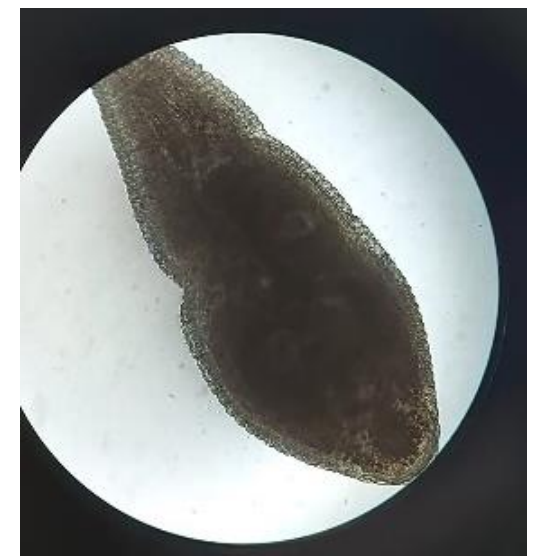
1.



2.



3.



4.

# Learning outcomes

- Take measurements
- Recognize good/bad river animals
- Working with the research cycle

